

World Leader in Sophisticated Packaging Systems**MBD22** Manual Bottom Drive**series overview**

The BestPack® MBD Series are operator-fed, adjustable, carton-sealing machines designed to cater to the needs of light to heavy duty, uniform carton closure applications.

The two bottom belts are driven by one bottom drive electric 110V UL approved motor. The MBD Series are also designed with four adjustable legs for quick easy height adjustment to production lines.

All systems incorporate our exclusive pop out pressure sensitive "High Speed" tape heads with patented tab adjustment.

major features

- Two Bottom Belts
- Telescopic Mast Design
- Adjustable Bed Height from 25.3" to 30.00"
- Box Top Compression Unit
- Height Adjustment either side of machine
- Extra 4" Carton Height Adjustment Available on Upper Assembly
- Guide Rail Centering Mechanism
- Tape Roll Lengths: 1000 yd., 1500 yd., 2000 yd.
- Heavy Duty Frame
- UL Approved Electrical Parts
- Sealer available in 2" or 3" tape heads

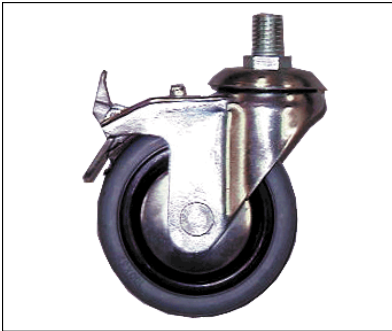
standard features

- Exclusive Pop-out pressure sensitive "high speed" tape head with patented tab adjustment and noise reduction arm
- Operation Manual and Spare Parts Kit

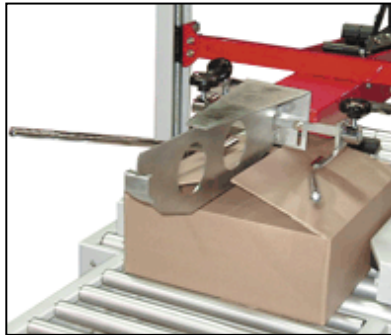
World Leader in Sophisticated Packaging Systems

optional features

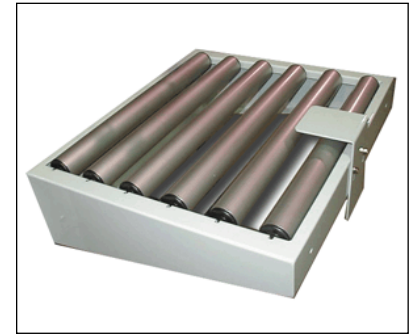
- *Locking heavy-duty caster (4 casters)*
- *Stainless steel*
- *Low or No Taper Sensor*
- *Interlock Safety Gates*
- *Packing Tray*



Locking Castors



3 Flap Folder



Infeed/Exit Conveyor w/ Stabilizer

machine & carton specifications

- *Power Requirements: 110 Volts 60 Hz*
- *Speed: Up to 40 cartons/minute*
- *Tape Head: Standard: 2"; Available: 3"*

series comparison table

Model	Machine Dimensions	Carton Range	Cartons/Min.	Weight (lbs.)
MBD22-2 2" tapehead	(42.9) x (30.0") x (60.4")	(6.0"-U) x (6.5"-20.0") x (3.0"-20.0")	Up to 40	272
MBD22-3 3" tapehead	(42.9") x (30.0") x (60.4")	(6.0"-U) x (7.5"-20.0") x (3.0"-20.0")	Up to 40	272

* All specifications capable of customization or subject to change without notice