

**World Leader in Sophisticated Packaging Systems****RS22** Random Side Drive**series overview**

The BestPack® RS Series Semi-Automatic Random Tape Carton Sealers are built for speed and rugged dependability. With these systems, random sized cartons are handled with ease whether your application needs call for a low profile top & bottom sealer or a heavy duty work horse.

All systems incorporate our exclusive pop out pressure sensitive "High Speed" tape heads with patented tab adjustment available in both 2" or 3".

**major features**

- **Handles Random Carton Sizes**
- **2 Side Belts**
- **Extra 4" Carton Height Adjustment Available on Upper Assembly**
- **Adjustable Bed Height from 20.25" to 30.75 on the RS22 and 23.85" to 30.75" on the RS23**
- **Tape Roll Lengths: 1000 yd., 1500 yd., 2000 yd.**
- **Heavy Duty Frame**
- **UL Approved Electrical Parts**
- **Rugged Construction**
- **Capable of Interchanging 2" or 3" Tape Heads**
- **Electrical on/off box can be mounted on either side of machine**

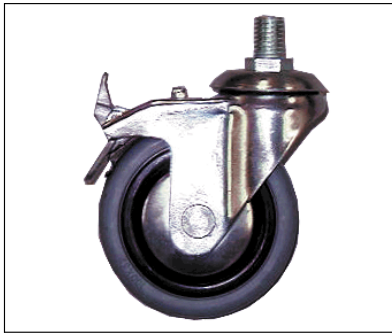
**standard features**

- **Exclusive Pop-out pressure sensitive "high speed" tape head with patented tab adjustment and noise reduction arm**
- **Maintenance Free, Oil-less Air Cylinders**
- **Operation Manual**

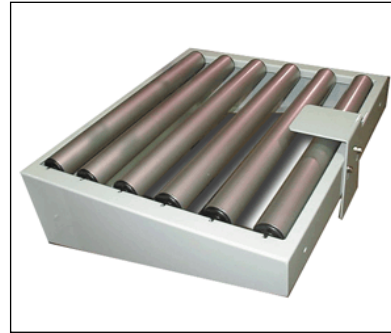
**World Leader in Sophisticated Packaging Systems**

**optional features**

- Spare Parts Kit
- High Speed Motor Upgrade (Up to 125 ft./mm.)
- Interlock Safety Gates
- Low or No Tape Sensor
- Stainless Steel



**Locking Castors**



**Infeed/Exit Conveyor w/ Stabilizer**

**machine & carton specifications**

- Power Requirements: 110 Volts 60 Hz
- Air Requirements: 80 psi, 5 cfm
- Speed: Up to 25 cartons/minute
- Tape Head: Standard: 2", Available: 3" or 6"
- Shipping Weight: 318 - 600 lbs

**series comparison table**

Model	Machine	Carton Range	Cartons/Min.	Shipping Weight (lbs.)
RS 20-2 2" tapehead	(42.8") x (34.6") x (57.5")	(6.0"-U) x (4.5"-21.6")	Up to 25	318
RS 20-3 3" tapehead	(42.8") x (34.6") x (57.5")	(6.0"-U) x (5.5"-21.6")	Up to 25	318
RS 22-2 2" tapehead	(42.8") x (34.6") x (57.5")	(6.0"-U) x (4.5"-21.6") x (3.9"-20.5")	Up to 25	410
RS 22-3 3" tapehead	(42.8") x (34.6") x (57.5")	(6.0"-U) x (5.5"-21.6") x (3.9"-20.5")	Up to 25	410
RS 23-2 2" tapehead	(42.8") x (34.6") x (76.0")	(6.0"-U) x (4.5"-21.6") x (3.9"-30.0")	Up to 20	440
RS 23-3 3" tapehead	(42.8") x (34.6") x (65.5")	(6.0"-U) x (5.5"-21.6") x (3.9"-30.0")	Up to 20	440
RS 32-2 2" tapehead	(42.8") x (44.6") x (57.5")	(6.0"-U) x (4.5"-30.0") x (3.9"-20.5")	Up to 20	462
RS 32-3 3" tapehead	(42.8") x (44.6") x (57.5")	(6.0"-U) x (5.5"-30.0") x (3.9"-20.5")	Up to 20	462
RS 33-3 3" tapehead	(42.8") x (44.6") x (65.5")	(6.0"-U) x (5.5"-30.0") x (3.9"-30.0")	Up to 20	600

\* Denotes 3" tape head specifications

\*\*All specifications subject to change without notice

**Corporate Office:** 10676 Fulton Court, Rancho Cucamonga, CA 91730-4848

**Website:** <http://www.bestpack.com> • **Email:** [sales@bestpack.com](mailto:sales@bestpack.com) • **Phone:** 888-588-2378 • 909-987-4258 • **Fax:** 909-987-5189